



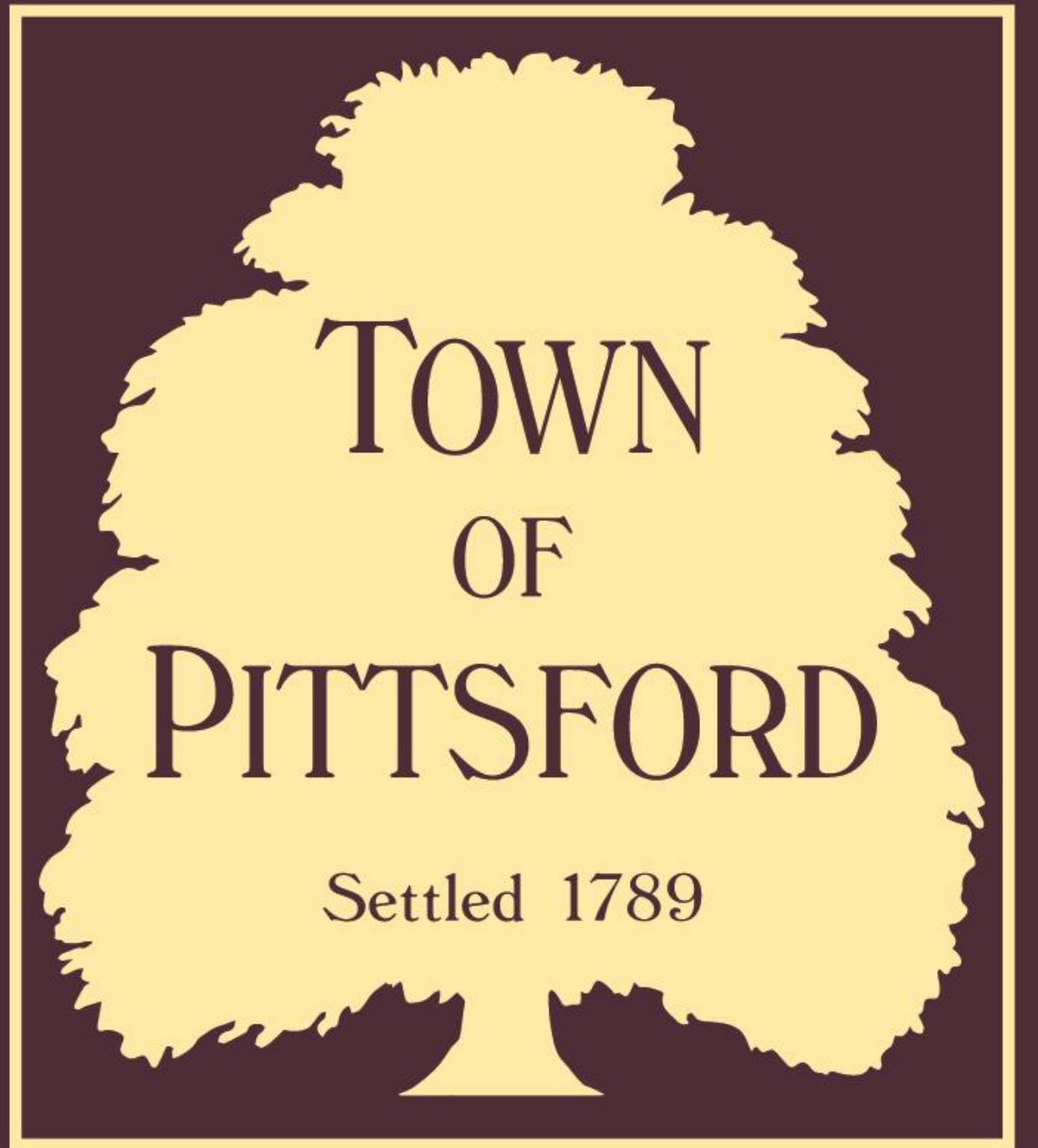
**Town of Pittsford, NY
Comprehensive Plan
Update**

Public Workshop

January 28, 2019

Welcome

**William A. Smith, Jr.
Town Supervisor**



A grayscale photograph of a rural landscape. In the foreground, there is a wooden fence and some tall grasses. In the middle ground, a calm pond reflects the surrounding trees and sky. The background shows a line of trees under a bright sky.

Agenda

- **Welcome**
- **Process Recap**
- **What We've Heard**
- **The Plan Framework**
- **Next Steps**
- **Workshop**



Process Recap

What is a Comprehensive Plan?

A document that...

- Identifies a preferred vision for the Town over the next decade
- Provides direction and guidance for land use decision making
- Defines a set of goals to accommodate future growth and preservation
- The basis for (potential) future zoning code amendments

**A
comprehensive
plan is NOT...**

- A catalog of every policy decision for the Town
- A finite document....it can change and evolve over time

The Process

Summer 2015 –
Spring 2016

**Where Are We
Now?**

**Where Do We
Want To Go?**

Committee Meetings
Website
Stakeholder Meetings
Public Workshop #1
Senior Workshop

Spring 2016 –
Summer 2018

**How Do We Get
There?**

Committee Meetings
Website
Stakeholder Meetings
Public Workshop #2

Summer 2018 –
Winter 2018

**Pulling It All
Together**

Committee Meetings
Stakeholder Meetings
Public Workshop #3

Winter 2018/2019

**Final
Comprehensive
Plan**

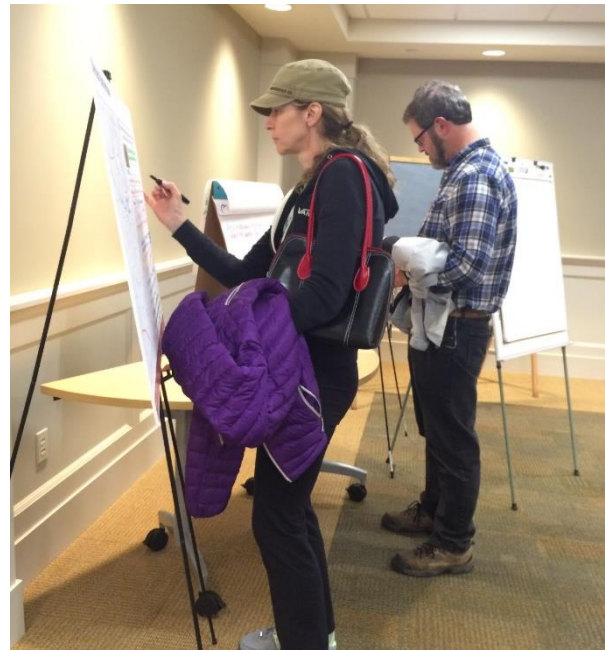
Committee Meetings
Website Updates
Town Board Meeting



What We've Heard

Engagement Recap

- **20+** stakeholder meetings
- **1** senior workshop
- **3** public workshops
- **14** committee meetings
- **1** project website
- **6+** newsletter updates



We Heard You...

Considerations for Policies and Actions

- Preservation of existing green space/open space/farmland (“community character”)
- Preservation of historic areas/buildings
- Walkability and linkages
- Consider environmental impact of development and pavement
- Incorporate renewable energy opportunities
- Limit additional, new traffic generation



The Plan Framework

Our vision for Pittsford:

A community that embraces its unique character and history to inspire a livable and sustainable future.



Components of the Policy Framework



Community Character

- Future Land Use
- Residential Development
- Commercial
- Mixed Use
- Open Space & Natural Resources
- Historic Preservation
- Agricultural Resources



Mobility

- Walkability
- Connectivity
- Complete Streets



Healthy Living

- Clean Energy
- Trails
- Recreation



Partnerships

- Partnerships
- Collaboration



Specific recommendations to be undertaken by the Town and its partners to achieve the overarching goals of Pittsford.

Goal Statements



1

Community Character

Maintain and enhance Pittsford's physical character and quality of life by managing future growth and development and protecting existing resources.



2

Mobility

Maintain and improve a balanced and efficient transportation system that provides choices, supports the Town's future land use plan, protects neighborhoods from adverse transportation effects and reinforces livability.



3

Healthy Living

Increase the use of parks and open space, and promote healthy living through an interconnected network of parks, trails, and open spaces, and by promoting practical policies for sustainability that have community support and that provide a net community benefit.



4

Partnerships

Continue to pursue partnerships and collaborative efforts with residents, community and business organizations, state and local agencies, and neighboring municipalities.





1

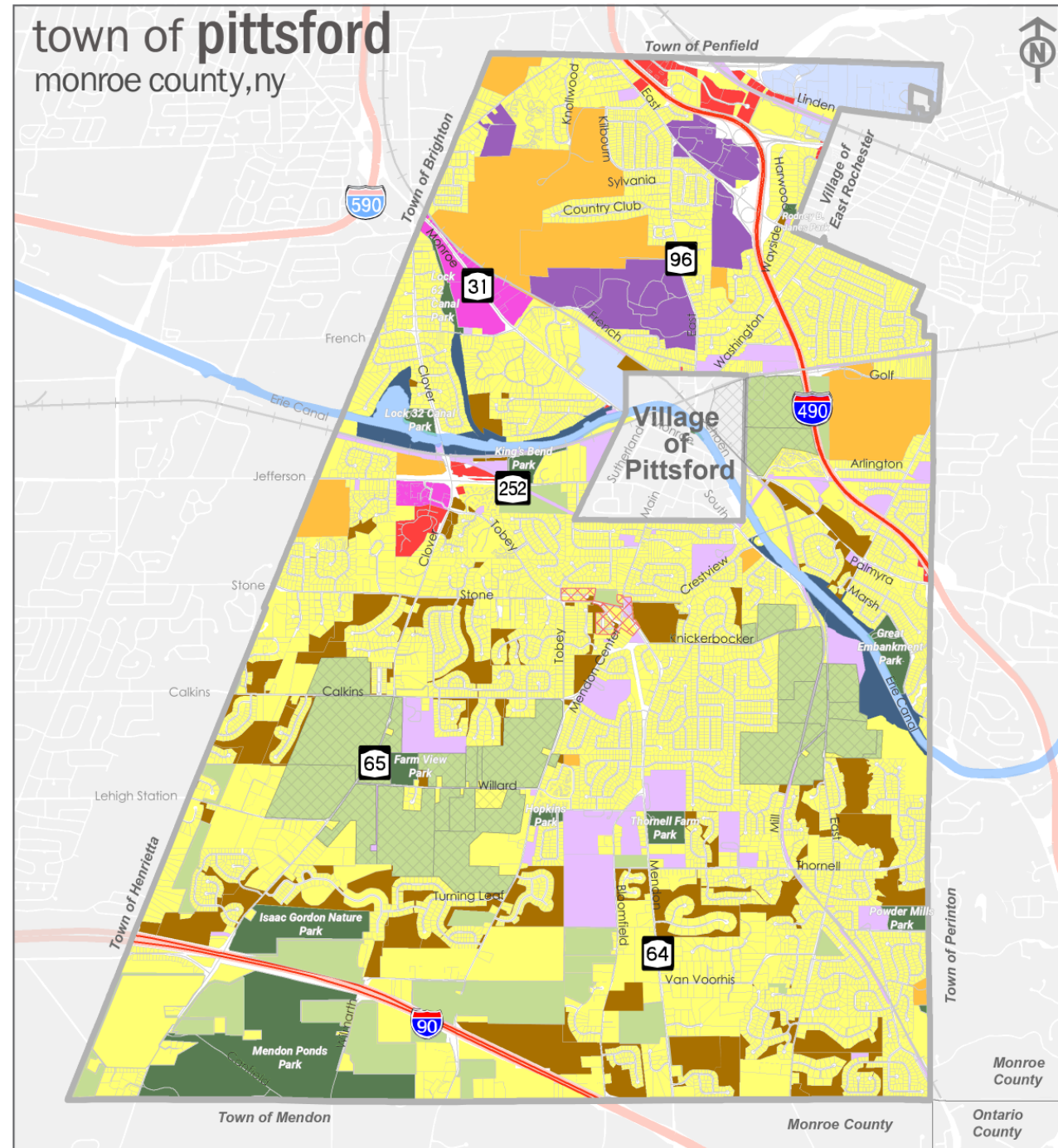
Community Character

Maintain and enhance Pittsford's physical character and quality of life by managing future growth and development and protecting existing resources.



Future Land Use

- | | | | |
|--|------------------|---|--|
|  | Commercial |  | Recreation & Entertainment |
|  | Residential |  | Public & Community Services |
|  | Light Industrial |  | Campus |
|  | Open Space |  | Local Waterfront Overlay District |
|  | Parks |  | PDR |
|  | Agriculture |  | Mile Post / Stone Town Historic District |
|  | Mixed Use | | |





Residential





Residential



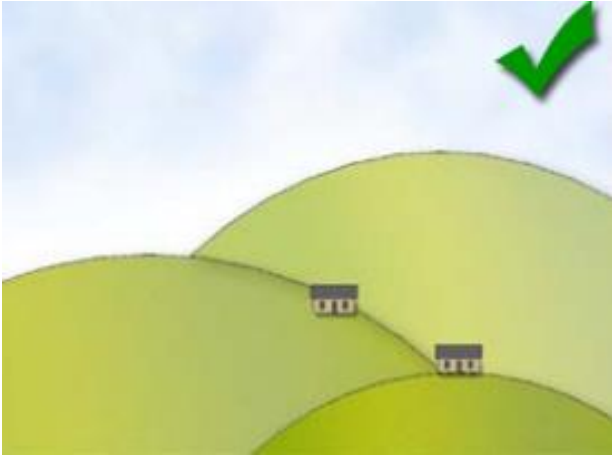


Commercial / Mixed Use





Natural Resources / Open Space



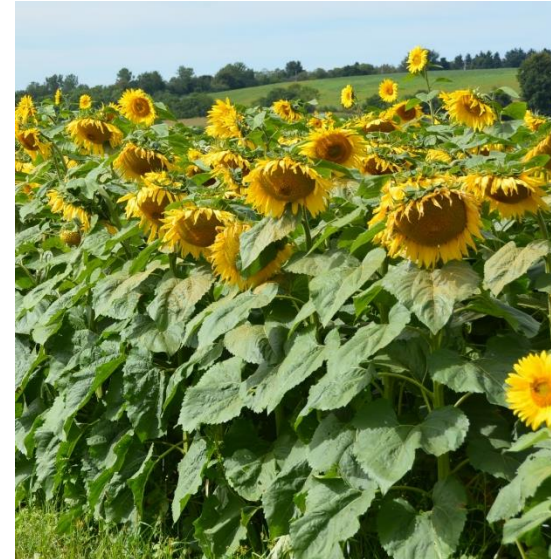


Historic Preservation





Agricultural Resources





2

Mobility

Maintain and improve a balanced and efficient transportation system that provides choices, supports the Town's future land use plan, protects neighborhoods from adverse transportation effects and reinforces livability.



Complete Streets





3

Healthy Living

Increase the use of parks and open space, and promote healthy living through an interconnected network of parks, trails, and open spaces, and by promoting practical policies for sustainability that have community support and that provide a net community benefit.

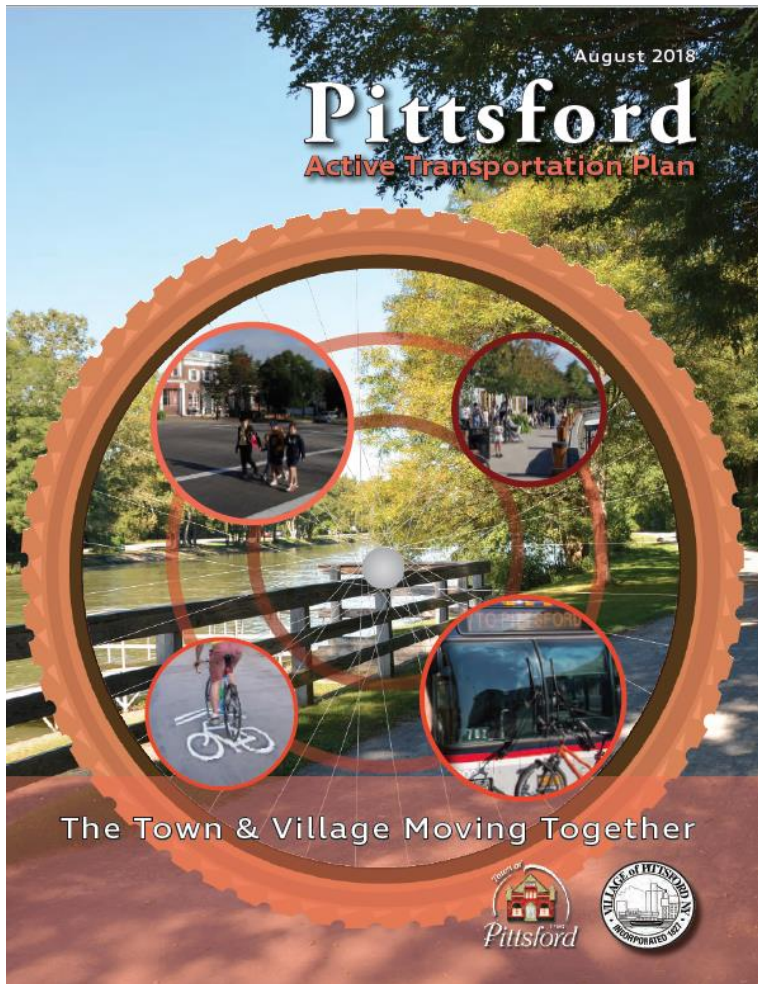


Clean Energy





Trails and Sidewalks





Recreation





4

Partnerships

Continue to pursue partnerships and collaborative efforts with residents, community and business organizations, state and local agencies, and neighboring municipalities.



Collaboration



Pittsford
Schools



Historic Pittsford
18 Monroe Avenue
585-381-2941



- 
- **Final Plan Development**
 - **Town Board Review**
 - **Town Board Adoption**

**Next
Steps**



Workshop

**Share your thoughts on recommended actions
for Pittsford!**

Workshop

SHARE YOUR THOUGHTS WITH US!

- Review the recommended actions identified on the boards around the room
- Tell us if you agree, disagree or feel neutral about each action
- Share additional thoughts or comments, as desired
- **Ask questions of the project team! We're here to help!**