

Village Recommendations

Pedestrian and Bicycle Network Recommendations

- # Pedestrian Recommendations
- # Bicycle Recommendations

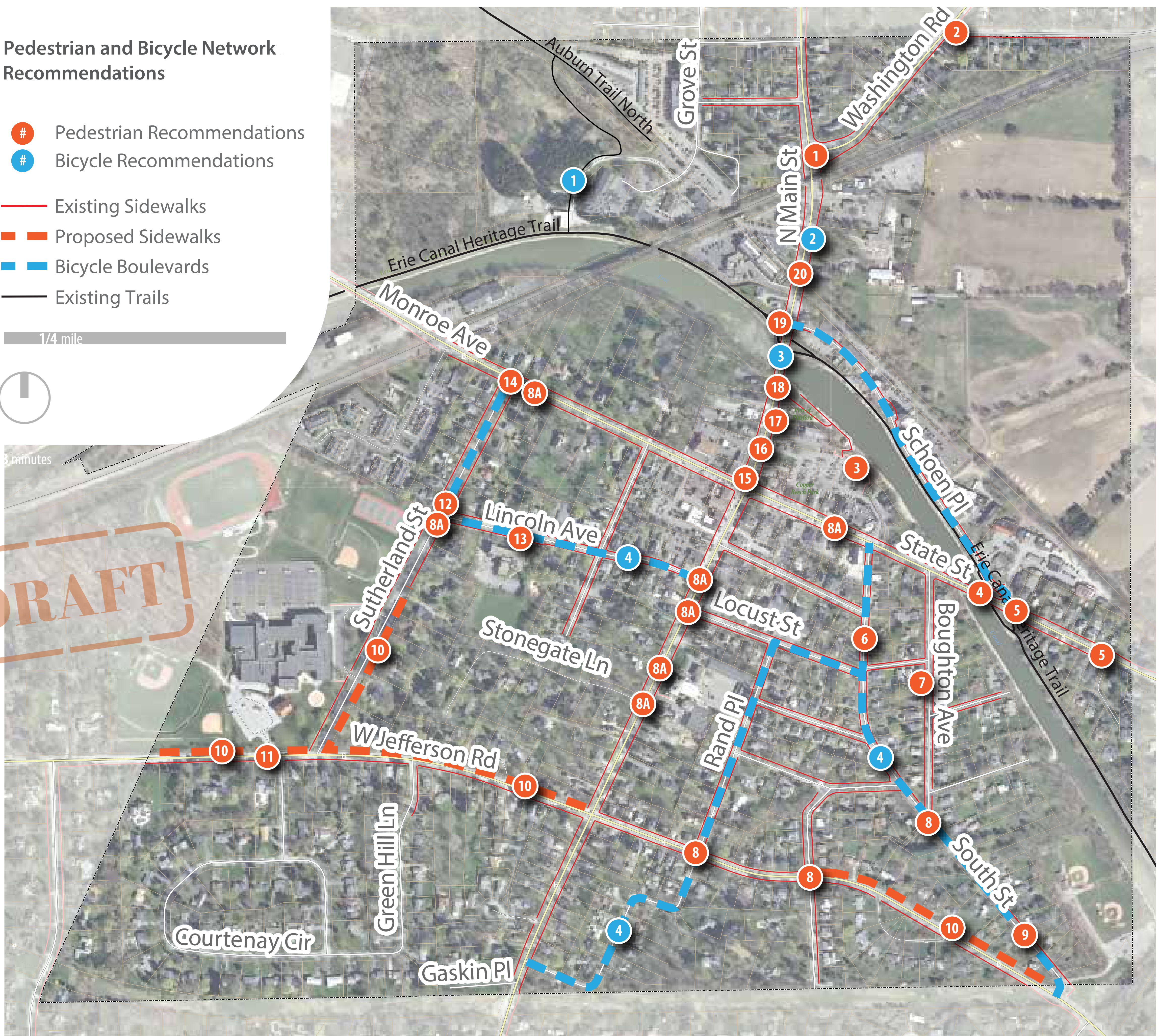
- Existing Sidewalks
- Proposed Sidewalks
- Bicycle Boulevards
- Existing Trails

1/4 mile



8 minutes

DRAFT



Pedestrian Recommendations

- 1 Develop pedestrian refuge on island.
- 2 Reduce curb radii at intersection.
- 3 Remove parking fronting Canal and redevelop as usable green space.
- 4 Improve bridge lighting.
- 5 Develop mid-block crossing and install yield to pedestrian signs.
- 6 Permit on-street parking (permitted everyday).
- 7 Install speed bumps.
- 8 Install / Maintain a yield to pedestrian sign at crosswalk.
- 8A Install ADA compliant curb ramps and install / maintain a yield to pedestrian sign at crosswalk.
- 9 Re-stripe to 9.5' travel lanes with 1.5' painted edges
- 10 Install sidewalks on north side of East Jefferson between Eastview Terrace and South Street; north side of West Jefferson Road between South Main Street and Sutherland Street; and the east side of Sutherland north of West Jefferson Road.
- 11 Install curbs to delineate pavement and to help keep cars off adjacent lawns.

- 12 Install curb extensions at Sutherland Street and Lincoln Avenue.
- 13 Install back-in diagonal parking in Lincoln Avenue in front of Community Center.
- 14 Discuss potential signal with NYS DOT.
- 15 Remove right-turn lane to create added parking and pedestrian space.
- 16 Shorten southbound left-turn lane.
- 17 Install on-street parking spaces.
- 18 Install mid-block pedestrian crossing and refuge island.
- 19 Improve crossing via enhanced signage (e.g., RRFB).
- 20 Install mid-block pedestrian crossing and refuge island.

Bicycle Recommendations

- 1 Develop connections from Auburn Trail to new preserve and Canal Trail.
- 2 Install floating parking with buffered bike lane along curbside.
- 3 Install bike lanes on both sides of roadway.
- 4 Develop bike boulevards and include signage and roadway markings.

Pittsford
ACTIVE TRANSPORTATION PLAN

